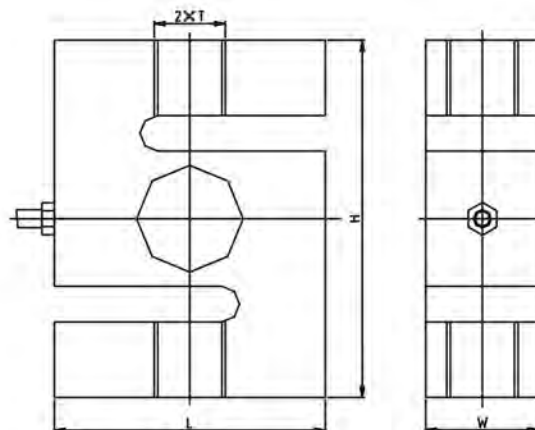


S-Beam



Rated

Load (kg; t)	H	L	T	W
100,150,200,250,300,500,750kg	76.2	51	M12	19.1
1000kg	76.2	51	M12	25.4
2, 3, 5t	100.4	76.2	M20×1.5	31.8

SPECIFICATIONS

Rated Capacities(E_{max})

Sensitivity: 3.0mV/V
 Input Resistance: 400 ± 10Ω
 Output Resistance: 352 ± 2Ω
 Operating Temp Range: -30°C~+70°C
 Safe Load Limit: 150% F.S.
 Recommend Excitation: 10V~12V
 Insulation Resistance: 5000MΩ
 Material: Alloy Steel

Total Error: ≤0.03% F.S

Seal Type: IP68

Wiring Schematic Diagram

